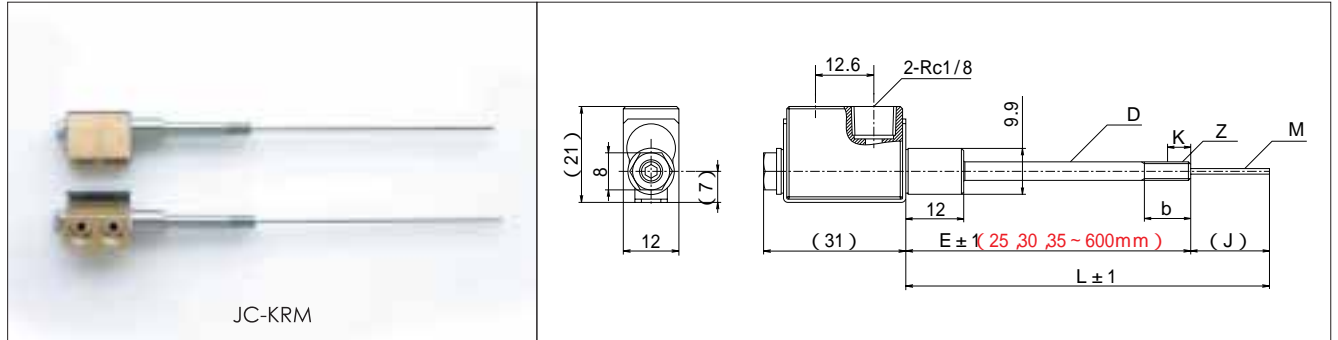


## Revolving Jet Cooler

### Characteristics

- Head revolves, and possible to take out tube in desirable direction.
- It is possible to push into the die with tube.



### Material

Head : Bs (Brass)  
 Outer Tube : SUS304  
 Inner Tube : SUS304

O-ring : JIS 4-D (Heat-resistance temperature 200°C)

● Maximum working pressure 1.5MPa

● Working fluid temperature Below 150°C

### Standard list

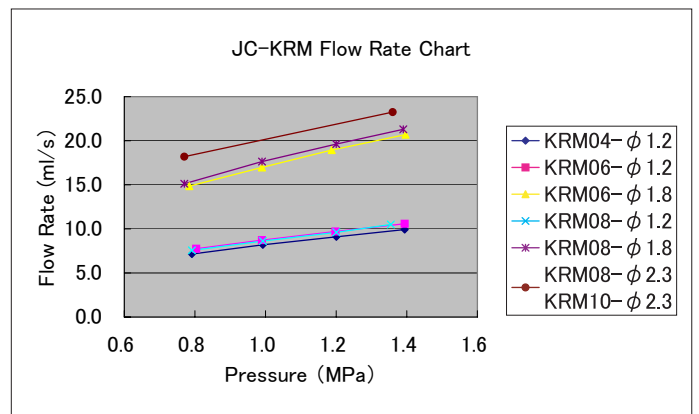
Model	Type	Nominal	Head Connecting Hose	Outer Tube					Inner Tube		Head Revolving O-ring
				Outer Dia. φD	Inner Dia. φd	Screw Z	Basic Dia. Location k	Screw Length b	Outer Dia. φM	Inner Dia. φm	
JC	KRM	04	Rc1/8	4.0	2.0	M4	—	10	1.20	0.85	P6
		06		6.0	3.0	M6	—	10	1.20	0.85	
		08		8.0	4.0	R1/16	4	—	1.20	0.85	
				1.80	1.35						
				2.30	1.80						
10	10.0	4.0	R1/8	4	—	2.30	1.80				

It is recommended to use largest possible inner and outer tubes.  
 ■ are standard inner tubes. Please designate M for other tubes.

### Product data

The flow rate of revolving Jet Cooler is shown in the right chart.

※The flow rate is measured with JECSS3L.  
 (Both for In and Out fluorine tube φ4-φ2 1m)




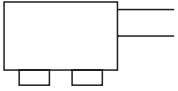
### Torque for tightening

Nominal	Recommended Torque for Tightening (N·m)
04	0.2
06	1
08	4
10	4

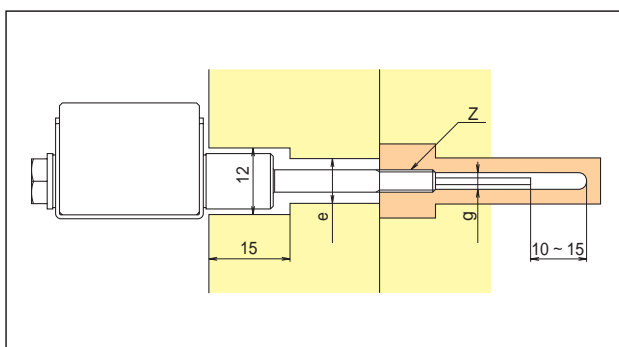
■ Note :

- When installing Jet Cooler on the die, please use a nut-driver to protect torque for tightening shown in table.  
Using monkey wrenches might damage it.

● Extra processing

Extra Processing	Extra Processing Code	Example/Remarks
Marking(English letters and numbers only) 4mm high	MK□□□ Designate letters or numbers	
With Coupler	Select from CO•4•6•8 (Only R1/8 Screw) (P.67)	
Inner Tube Designation	M	Select from $\phi$ M column

● Recommended size



Model	Nominal	Hole on Die Mold	Screw	Hole Dia. at Top
		$\phi e$	Z	$\phi g$
JC	04	8	M4×0.7	2.0~
	06	10	M6×1	3.5~
	08	12	Rc1/16	4.5~
	10	12	Rc1/8	4.5~

※Tube Coupler is separately sold. (Please refer to P.67.)

● Example of order code designation

Model	Type	Nominal	LengthL	OuterLength E	Inner ProtrusionJ	Inner Tube Outer Dia. M	Designate L E J
JC	KRM	06	L250	E200	J50	M1.2	※Please order L,E,J by a 1mm unit. M is entry-free in the case of standard.

● Example of order extra processing

Model	Type	Nominal	LengthL	OuterLength E	Inner ProtrusionJ	ExtraProcessing Code
JC	KRM	06	L250	E200	J50	MK59N - C04 - M1.2