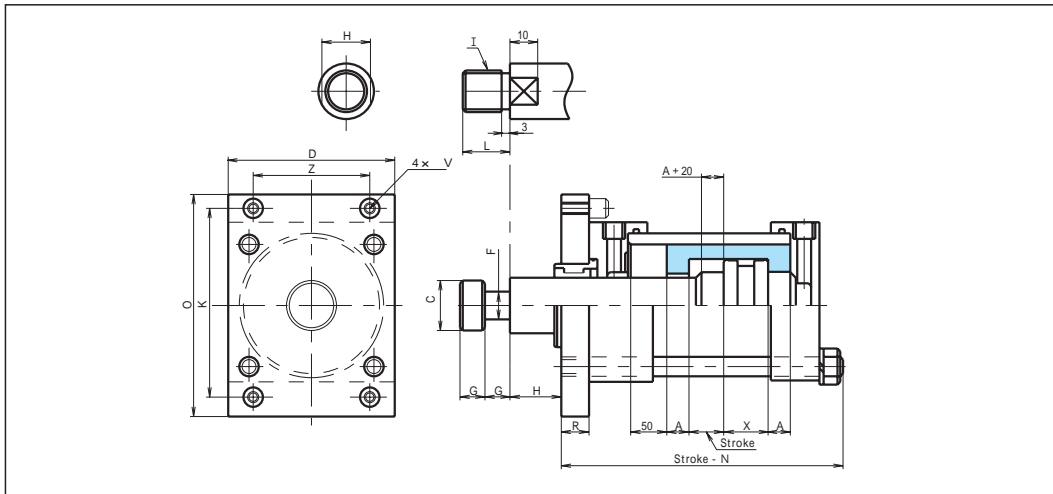


Core Pull Cylinder (Two-Speed Type)

Characteristics

- PTS is 2-speed cylinder with double cylinder construction.
- Strong power is obtainable for core pull out. Usually small diameter cylinder speed is obtainable.

Dimension drawing



Please refer for the details of dimensions.

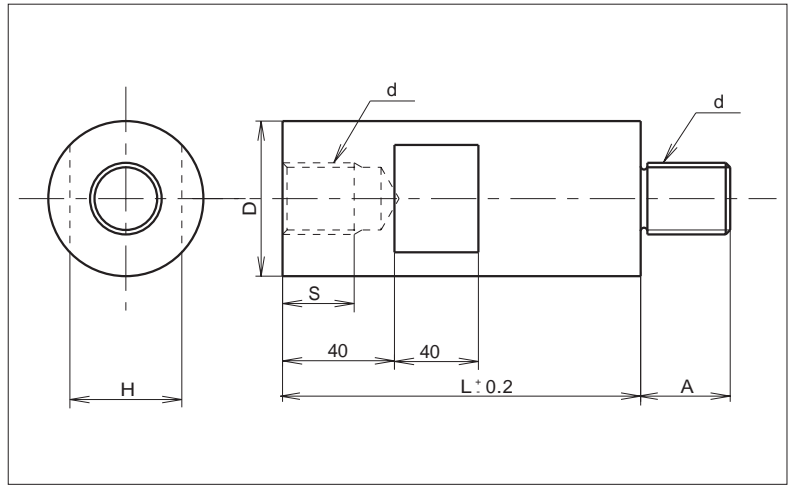
Standard

Model	Color	Hydraulic pressure	Rod-end	Cylinder I.D.(ϕ)	Cushion	Stroke
PTS	Green	14MPa	C (Coupling) M (Screw type)	100	B(both sides) R(Rod side) H(head side) N(none)	Size designation in 10mm unit
				110		
				125		
				150		
				160		
				180		
200						

Example of order code designation

Model	—	Rod-end	—	Cylinder I.D.	—	Cushion	—	Stroke
PTS	—	C	—	ϕ 100	—	B	—	100

Core Pull Support (Round)



Material

SCM435

● **Standard**

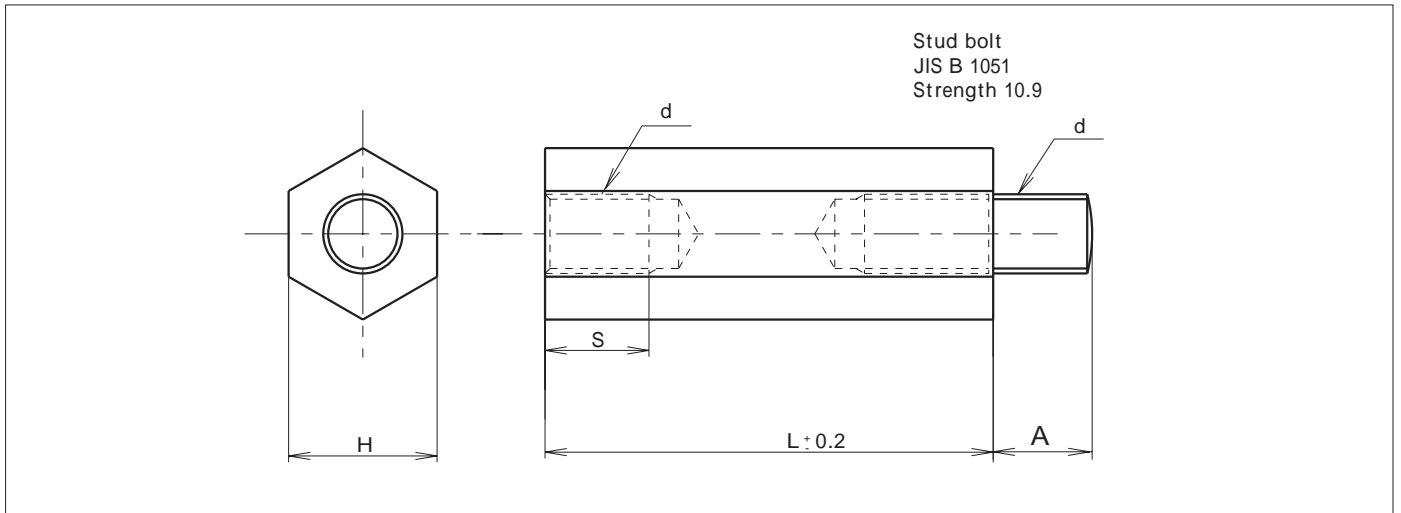
Model	H	d	S	A	ϕD	$L \pm 0.2$
PS	50	M24	30	33	60	Size Designation
	75	M36	45	50	90	

● **Example of order code designation**

Model — H — L

PS — H50 — L450

Core Pull Support (Hexagonal)



Material

S45C

Standard

Model	H	d	S	A	L ± 0.2
PS6	30	M16	21	25	Size designation
	36				
	46	M20	25	28	
	50	M24	30	33	
	75	M36	40	50	

Example of order code designation

Model — H — L
PS6 — H36 — L310